

Pop-up Power Installation Guide

Important Notes if to be used in kitchen and other home environment

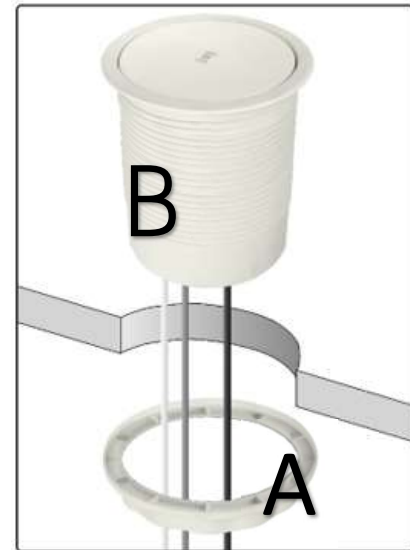
The pop-up power is designed for commercial office use (and complies with the office electric installation standard BS5733/A and BS6396). If you plan to use in kitchen and other home environments, you may need to replace the 3.15A fuses with 13A ones, especially when appliances of 0.75 KW or over will be plugged in.

Check our Youtube channel on how to replace the fuse:

<https://www.youtube.com/user/AllcamLTD>

Fitting instructions

1. Use a standard $\varnothing 127\text{mm}$ hole saw to cut a hole in the worktop where the pop-up power is to be installed
2. Undo the fixing ring (part A);
3. Pass the cable and the power module (part B) through the hole



4. Tighten the fixing ring (A) against the worktop.



More Info

Allcam, Merit House Stanhope Street

Birmingham B12 0UX

Web: www.allcam.co.uk Tel: 0121 4408900

Email: support@allcam.co.uk

