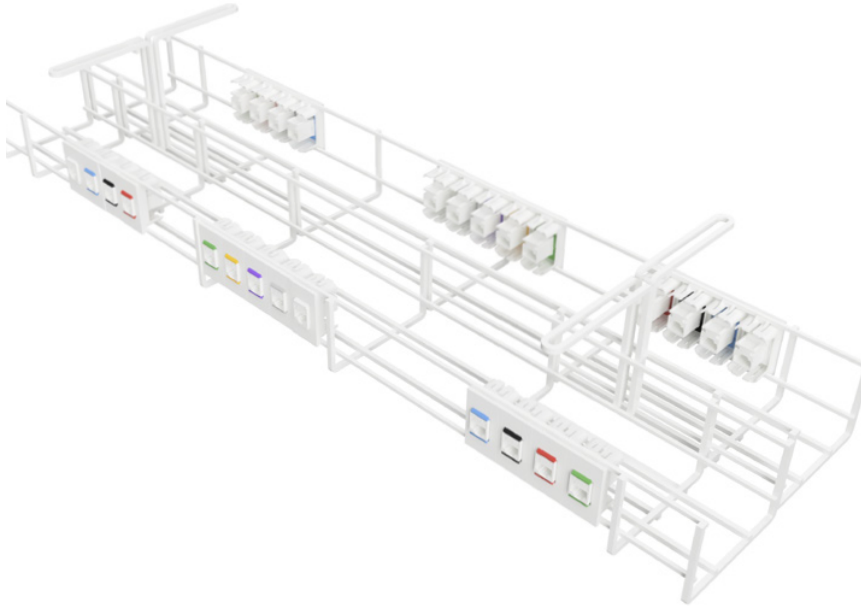


# QikTRAY



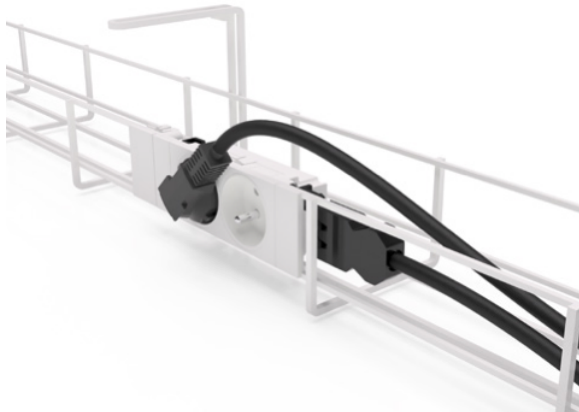
Two QIKTRAY's back to back

The QIKTRAY cable basket offers a unique combination of features: speed of installation, strength, versatility, aesthetics and a configurability unlike anything that has been seen before within a cable management system.

The QIKTRAY has been designed to allow the QikFit Power, Data and AV components to simply 'click' directly into the face or back of the basket without the need for separate brackets, clips or parts. It is also possible to stack the single tier baskets to create a sturdy multi-tier solution within a matter of seconds.

These features combined with the built-in mounting brackets make the 'QIKTRAY' the basket to use if speed of installation is paramount.

The QIKTRAY is simply the smartest basket on the market: 'less is so much more'.



## USPs

- Compatible with QikFit modules
- Quick installation
- Stackable
- Pathfinder bracket



# technical

## Available lengths

- 600mm (two mounting points)
- 900mm (two mounting points)

## Stackable

- Single tier baskets are stackable to create a sturdy double tier system without the use of external brackets within a matter of seconds
- Back to back solution: Single tier baskets can be used 'back to back', allowing all the benefits of a double tier basket within minimum height requirements – ideal for 'sit to stand' desks

## Speed of installation

Designed to allow the 'QikFit' range of Power, Data and AV products to simply 'click' directly into the face of the wire basket without the need for extra clips, panels or adaptors. All inter-connecting leads and data leads are terminated within the basket itself, saving time on installation. In-built extended mounting arm for easy screw mounting

## Versatility

The simple 'click in/click out' installation allows for fast and easy re-configurations or changes that may be required on site

## Flexibility & strength

Engineered with a combination of 3mm square wire to allow the flexibility required for Power, Data and AV installation, and 4mm square wire that gives the QikTRAY its unparalleled sturdiness when installed

## Cost effective

In-built mounting arm & snap-in functionality = no additional brackets, clips or panels required for installation

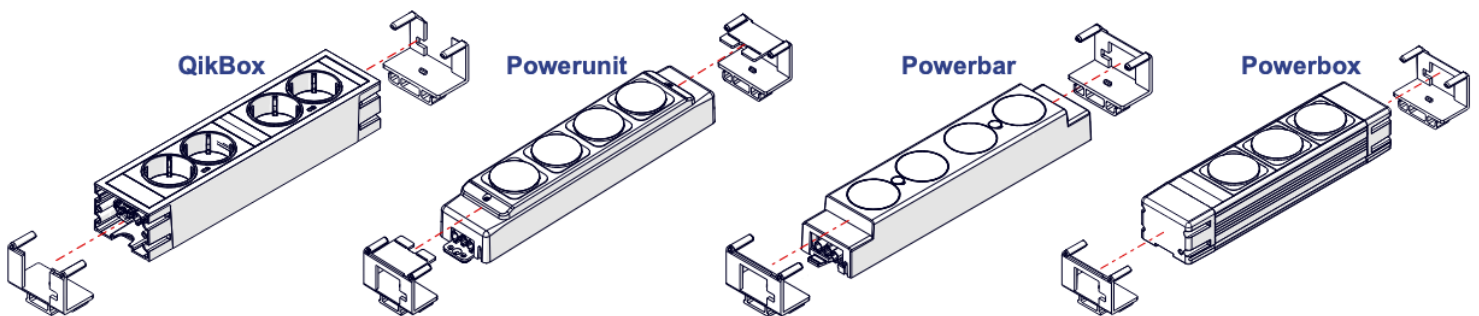
## Compatible

Compatible with the Pathfinder Umbilical Mounting Bracket for a complete sleek cable management solution

## Colours

White only.

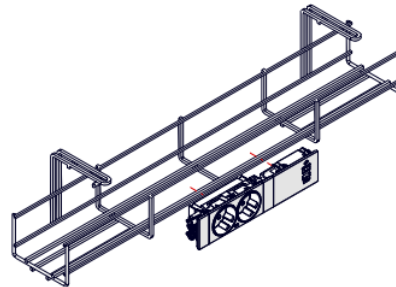
## Compatibility



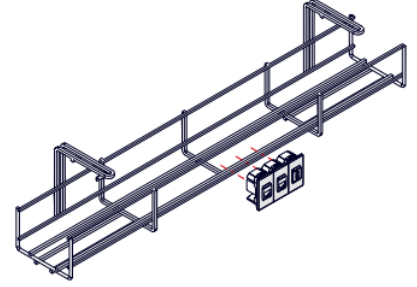
## Pathfinder mounting bracket



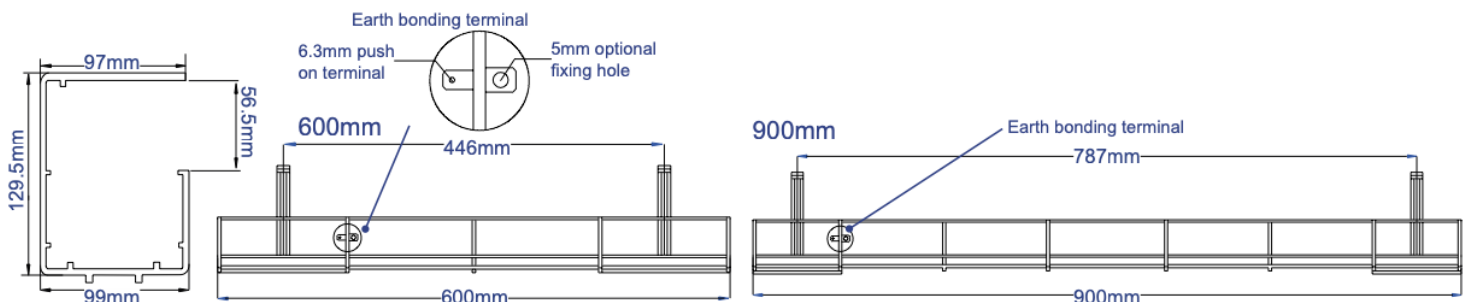
## QikFit Power & QikFit TUF



## QikFit Data



## Dimensions



**oelectrics**  
always innovating

United Kingdom - USA - Germany - Dubai - Australia

OE House, Thomas Maddison Lane, Calder Park  
Wakefield, West Yorkshire, WF4 3GH  
Tel: +44 (0) 1924 367255 Fax: +44 (0) 1924 290652  
Email: sales@oelectrics.co.uk www.oelectrics.com