

# Axis65

## ON desk power solutions



Axis65 is a compact on-desk power module designed for modern workspaces.

It combines a single AC power socket with USB C+C 65W charger, delivering essential connectivity in a clean, minimal form.

Easy to install with a C-clamp system. This fits desk thickness from 10–38 mm and integrates seamlessly into any environment.

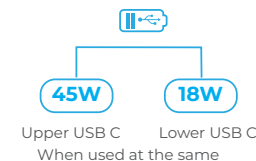
**Axis65 - Essential power, refined.**



AVAILABLE SOCKET TYPES:



E TYPE F TYPE G TYPE USB CHARGER



FASCIAS ● ○ BODY ● ○ ●

## USP

- ONE POWER SOCKET (SCHUKO, UK OR FRENCH/BELGIAN)
- ONE USB C+C PD 65W CHARGER FOR FAST CHARGING
- THE MODULE USES AN EASY-TO-FIT C CLAMP
- FITS DESK THICKNESS BETWEEN 10 - 38 MM
- OPTIONALLY AVAILABLE WITH A CLAMP FOR UNDER-DESK INSTALLATION
- ALL STANDARD OPTIONS COME WITH A 0.5M DROP LEAD TO 3 POLE CONNECTOR
- AVAILABLE IN BLACK OR WHITE, WITH BLACK, WHITE OR SILVER BODY
- COMPLIES WITH THE BSI KITEMARK KM 686563 (UK), IEC 60884-1:2002 + A1:2006 AND IEC 60884-2-7:2011 + A1:2013 (EUROPE)

APPROVALS & CERTIFICATES:



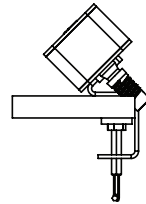
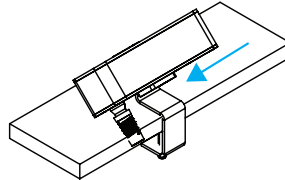
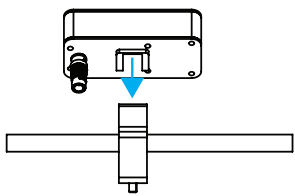
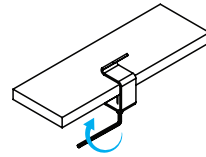


## INSTALLATION

### Standard top fix:

**STEP 1.** Place the clamp onto the edge of the desk and tighten it using Allen Key.

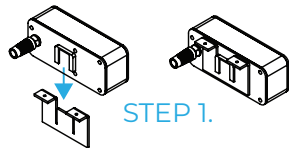
**STEP 2.** Slide the module onto the clamp.



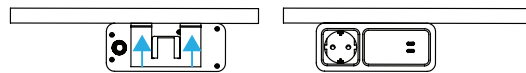
**Note:** Optionally available with a clamp for **under-desk installation**.

**STEP 1.** Slide the module onto the clamp.

**STEP 2.** Secure the clamp with the module using the supplied screws, aligning them with the designated fixing points on the clamp.

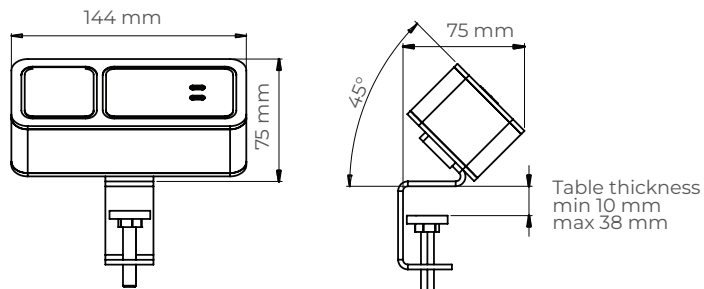


STEP 1.



STEP 2.

## STANDARD DIMENSIONS



## TECHNICAL

### Configuration:

Power / USB C+C chargers (PD & QC) / Combined

**Earthing:** Fully earthed

**Fusing:** UK type socket with resettable 3A thermal fuse

**Power cord:** 0.5 m standard lead with 3 Pole connector allows mains or connector leads to be attached to suit requirements, especially useful during moves and changes. Alternative available with a hardwired cable with appropriate national mains plugs.

**Testing:** 100% testing - continuity, polarity & earth

Testing of the USB PD & QC chargers: Output voltages, electrical current, and power in all types of charging standard.

All Axis65 power modules are fully manufactured in-house using ISO 9001:2015 quality-controlled practices.

Our certified power modules are tested in accredited laboratories of certification houses twice a year; while in-house quality control testing of each product is completed on every single power module before it leaves the factory.